

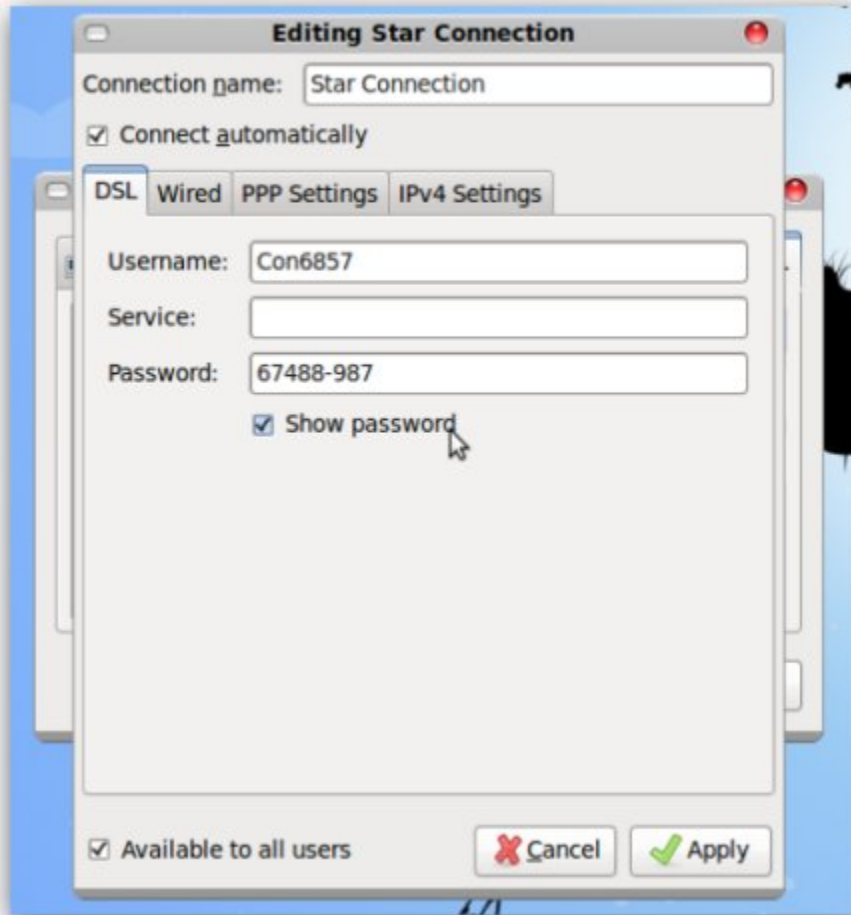
Setting Up PPPoE Connection in Linux

For now let's see how you can set up a PPPoE connection using graphical interface (in this certain case we will use Ubuntu 9.04, though Ubuntu 9.10 beta is already available).

- 1) Open: System – Preferences – Network Connection. Choose DSL tab and press "Add":



Fill in the "Connection name" (anything you want), "Username" and "Password" fields, check or leave unchecked "Connect automatically", "Show password" and "Available to all users" boxes:

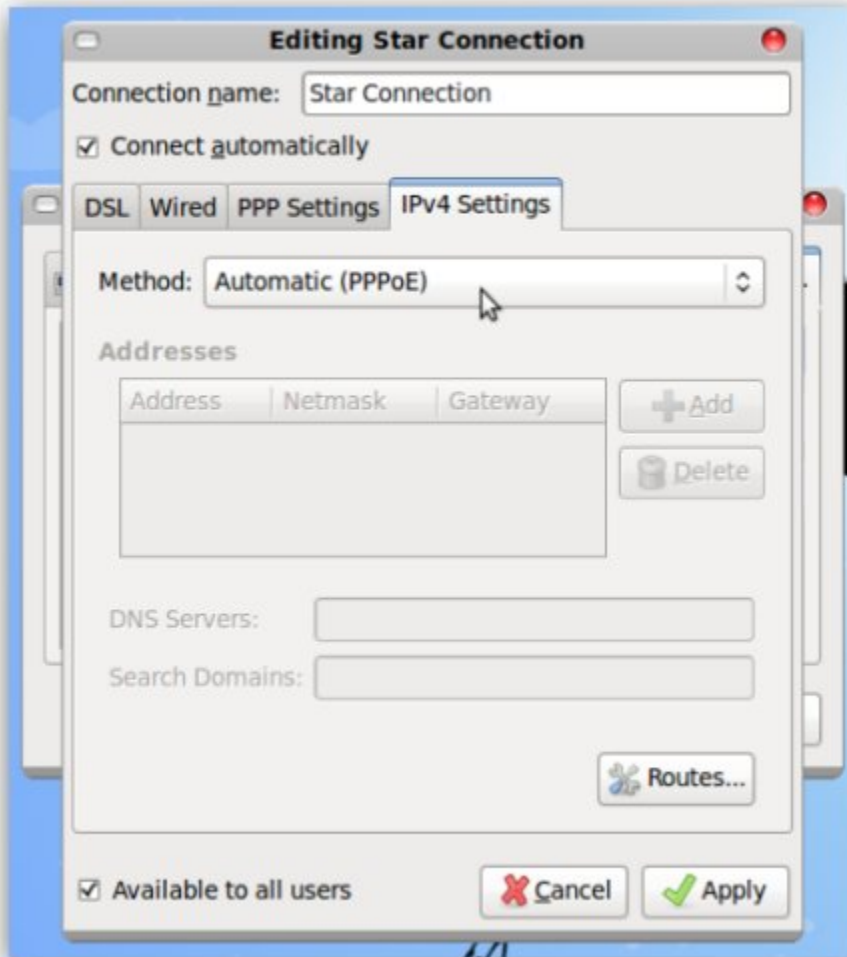


Enter the information for your account:

- Username: Enter your username, e.g. 6046381818@pppoe.net
- Password: Enter your password e.g. [V6X4J7](#)
- Confirm password: Enter your password again

NOTE: In case you are going to use this connection just for the Internet, you can leave "Service" field empty.

Choose Ipv4 Settings tab and make sure that the Method is Automatic (PPPoE):



That's it! Now you can connect to the Internet without any problems.

Thank you for using services from Lynx Communications
Automated Phone Support available at 604-638-1818, press 2
Other enquiries please contact:
For Account Information, 604-638-1818 ext. #1100
For Technical Support, 604-638-1818 ext. #1140