

How to configure PPPoE on your Netgear RP114 Router

1. Open **Internet Explorer** and in the “Address Bar” field type 192.168.0.1 and then click ‘Go’.

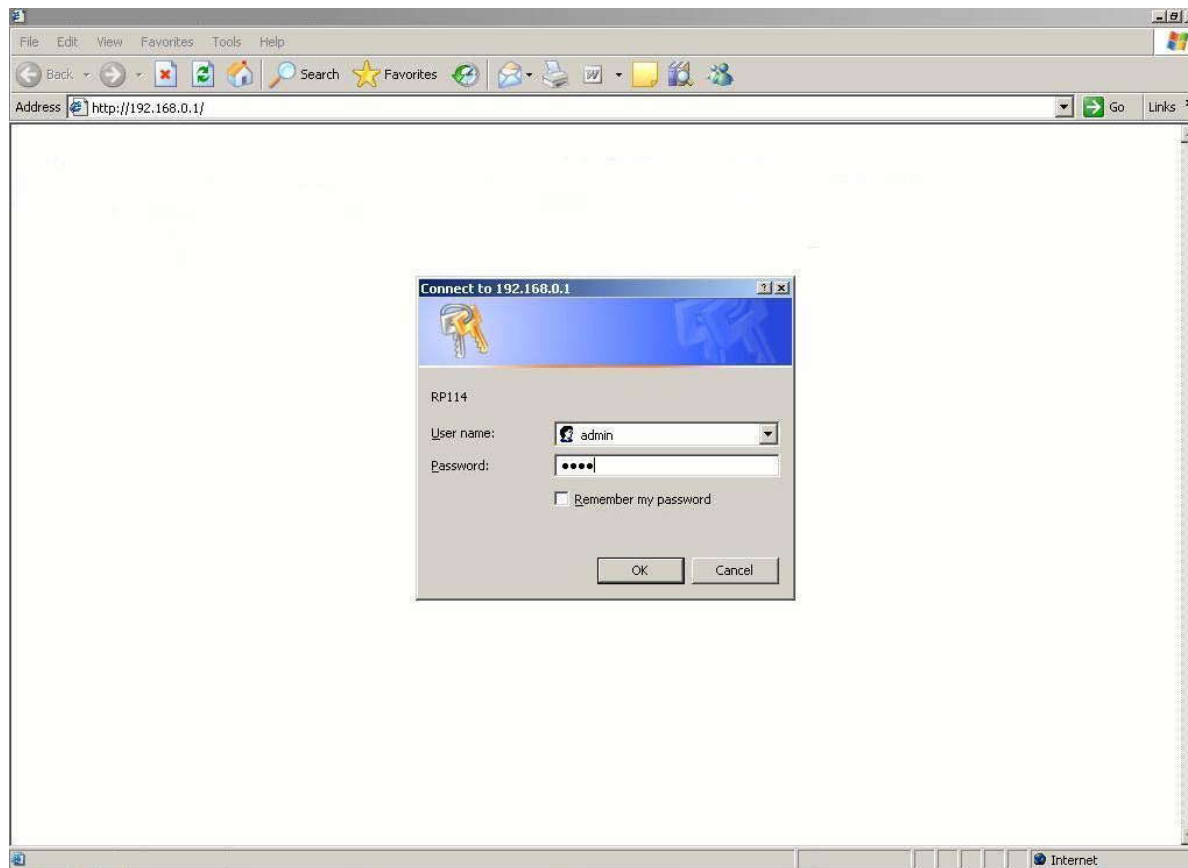


Figure 1 Internet Explorer with login pop-up window

When prompted, enter your User name & Password for your router.
The default username & password is:
Username: admin
Password: 1234

2. Click 'WIZARD SETUP' from the menu on the left

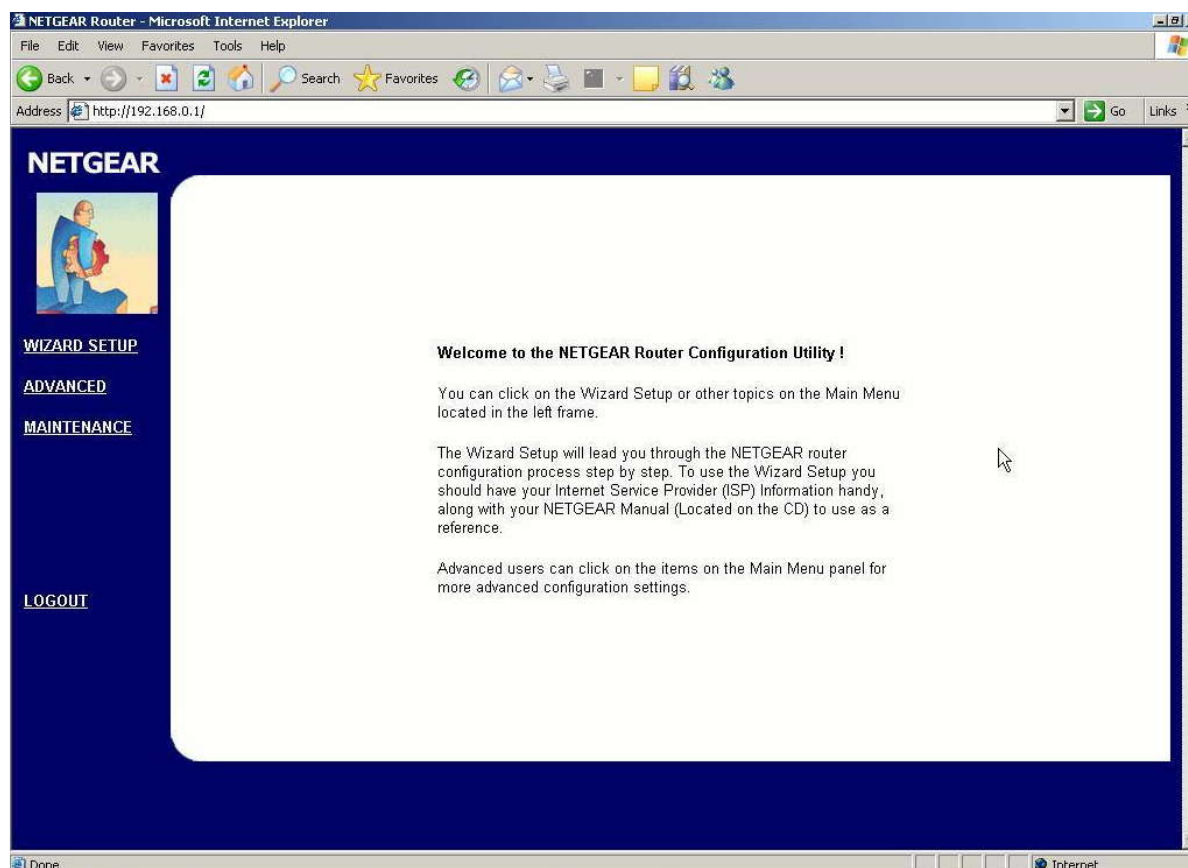


Figure 2 Internet Explorer: Netgear Welcome Page

3. Click 'Next' on the screen below. You do not need to enter any information on this screen.

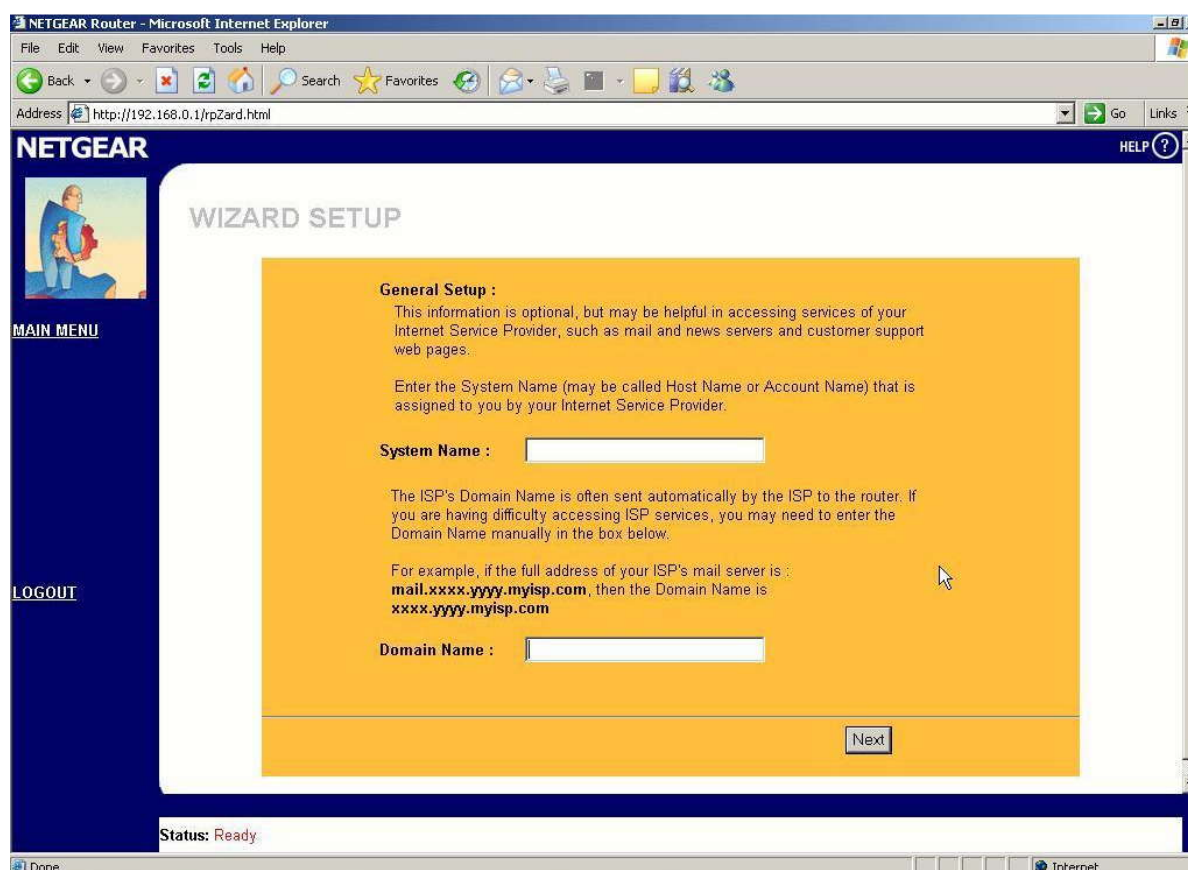


Figure 3 Internet Explorer: Netgear Wizard page

4. Select “**PPP over Ethernet**” from the encapsulation dropdown box.

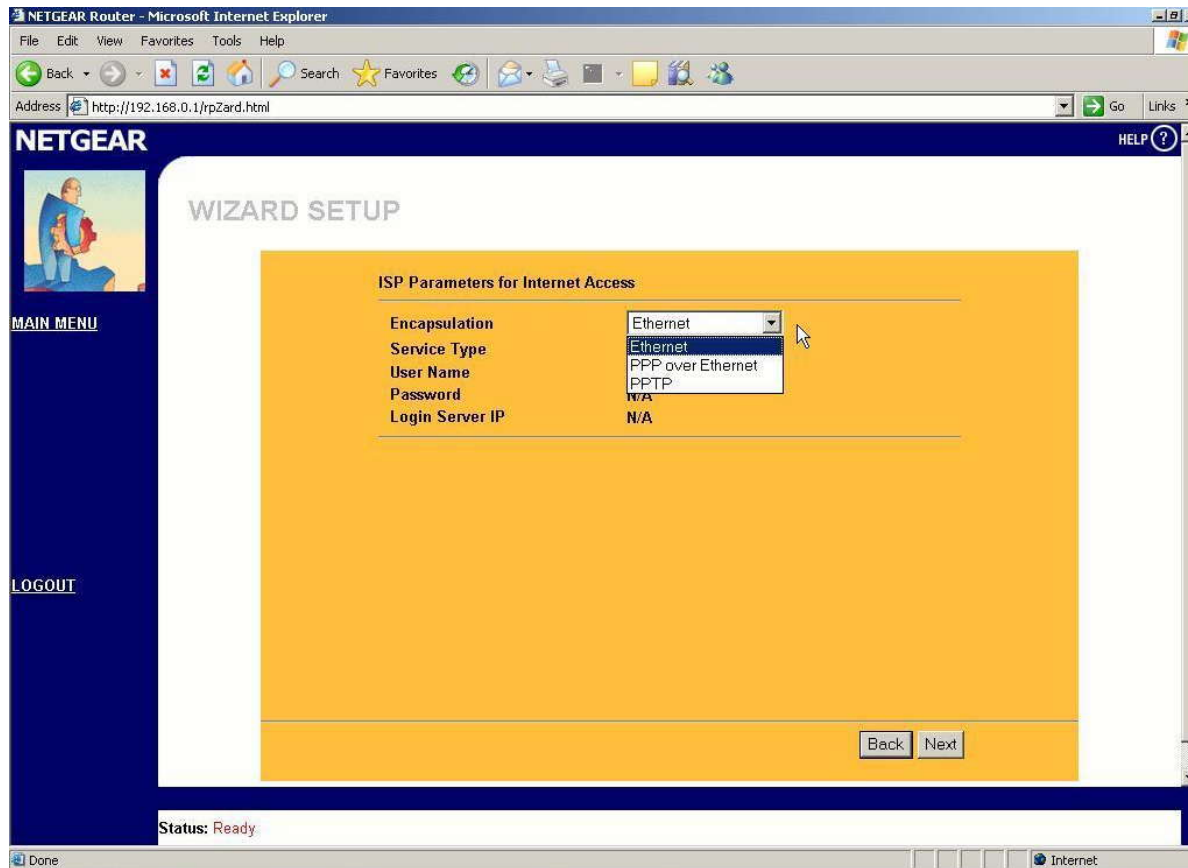


Figure 4 Internet Explorer : Netgear Wizard page 2

5. Once you have selected the ‘PPP over Ethernet’ option, you will then need to add your username and password (i.e. **Username: 6046381818@pppoe.net**, **Password: V6X4J7**). Please also ensure there is nothing in the “Service Name” field, and change the idle Timeout to be “0”

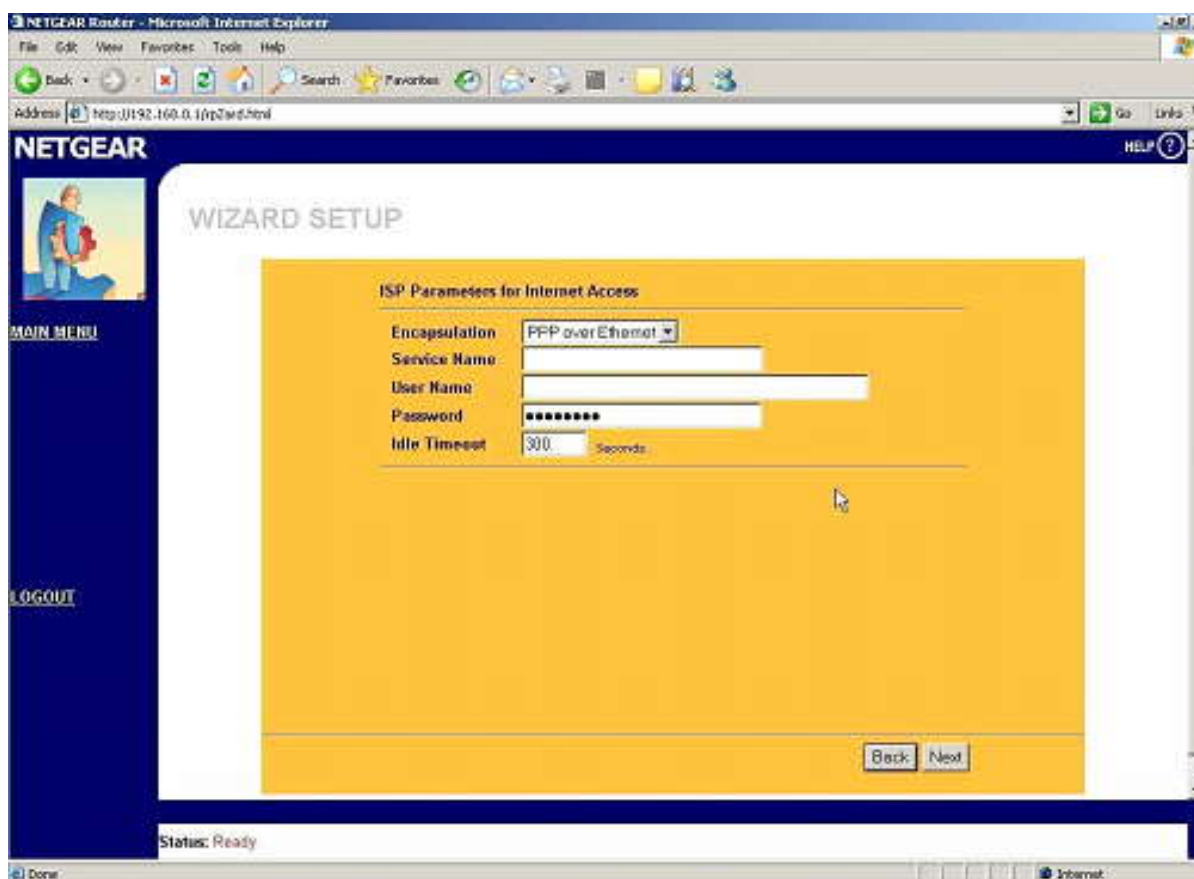


Figure 5 Internet Explorer : Netgear Wizard page 3

6. Click 'Next' when completed.

7. Leave the options on this page as the default settings which are as below. Click 'Finish' when completed

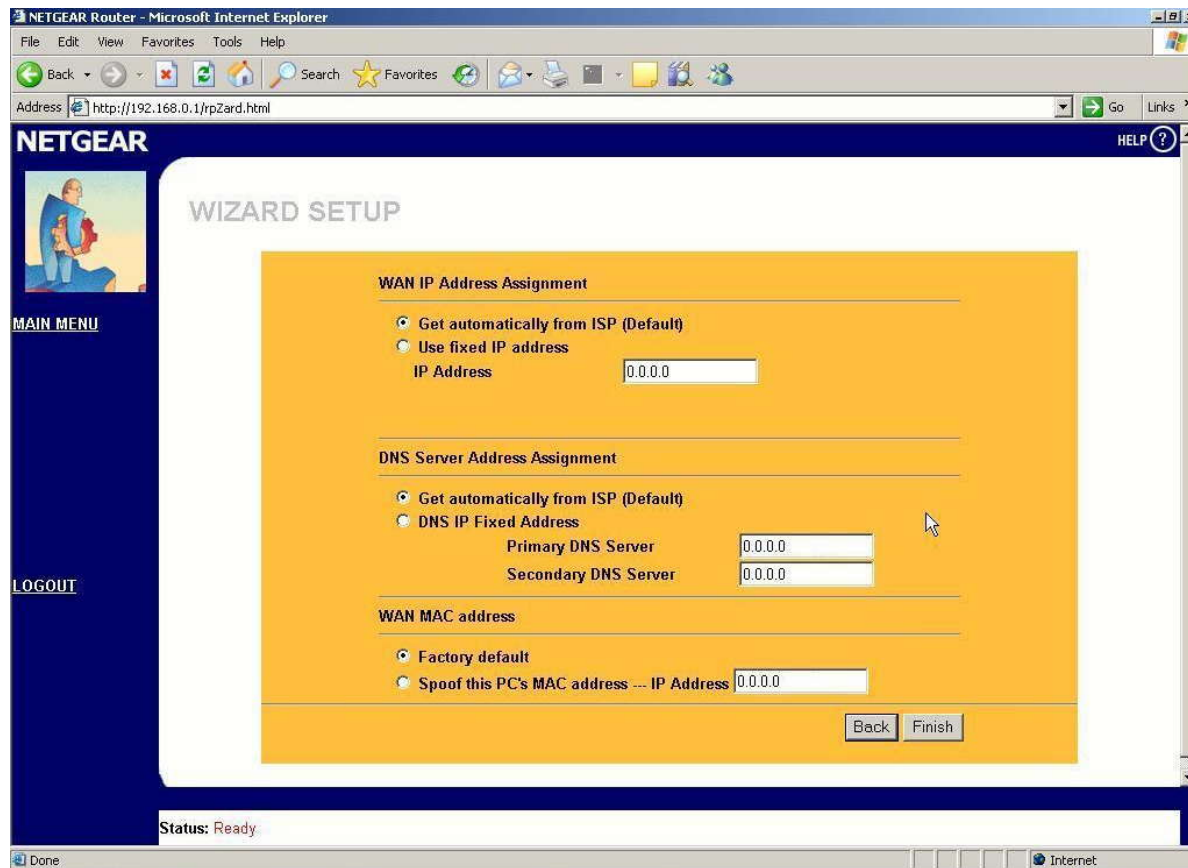


Figure 6 Internet Explorer : Netgear Wizard page 4

8. You should now be able to connect to the internet.

Please Note : That this is only a guide and for more detailed instructions please consult your Netgear Router users' manual.

Thank you for using services from Lynx Communications
Automated Phone Support available at 604-638-1818, press 2
Other enquiries please contact:
For Account Information, 604-638-1818 ext. #1100
For Technical Support, 604-638-1818 ext. #1140