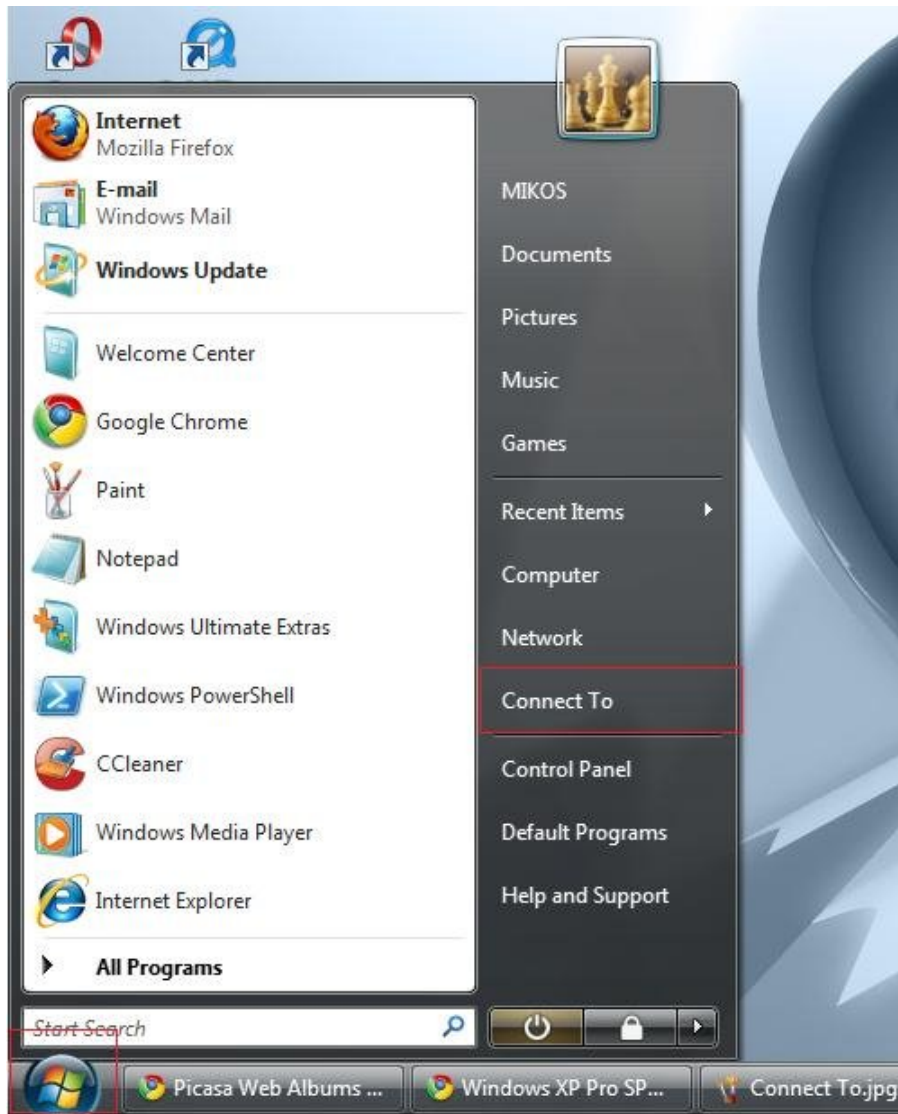


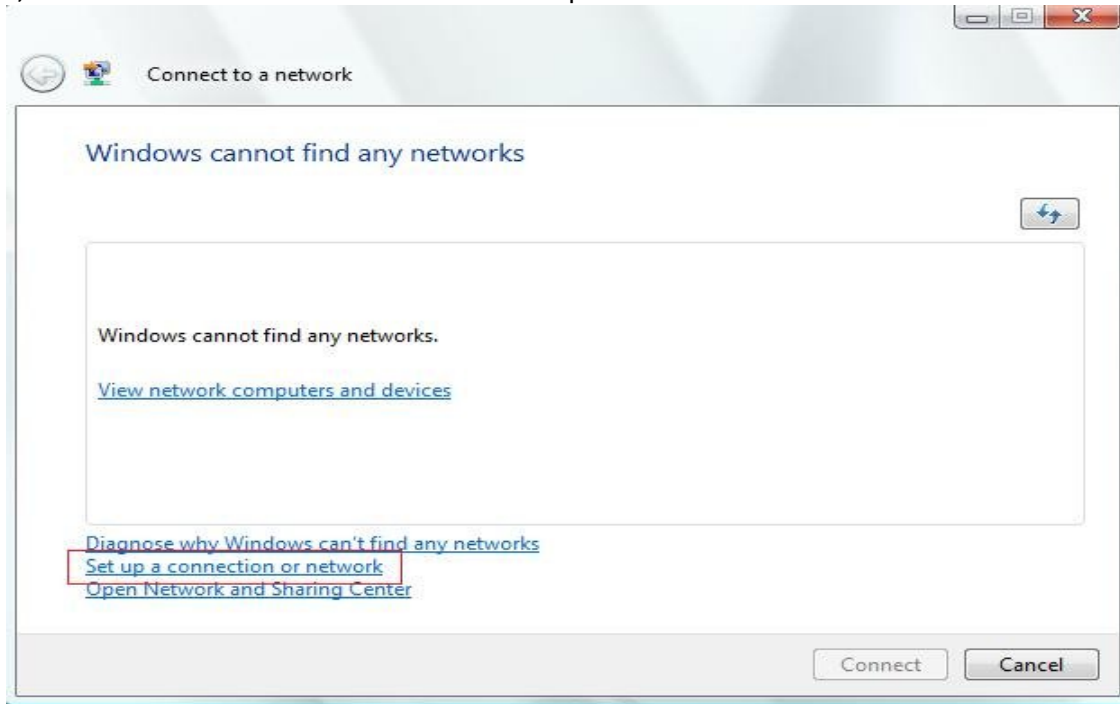
STEPS IN CREATING PPPOE DIALER IN WINDOWS VISTA

Here are the steps in creating a PPPoE Dialer in Windows Vista:

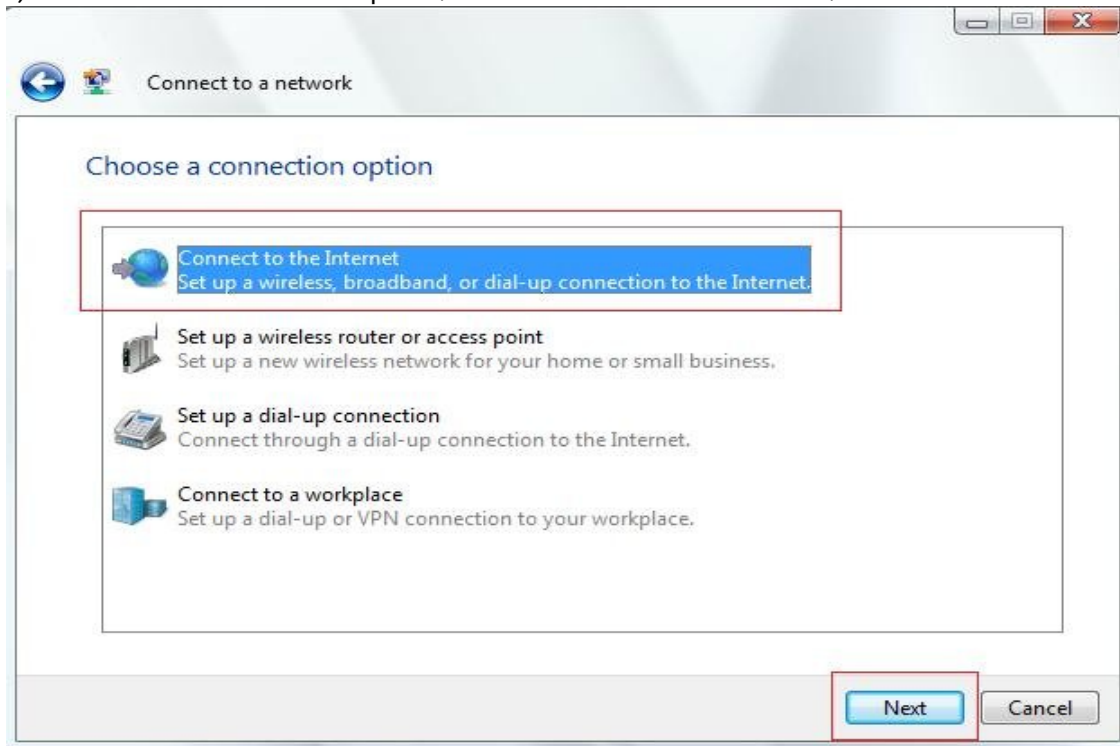
1) Click on Start and Click on Connect To



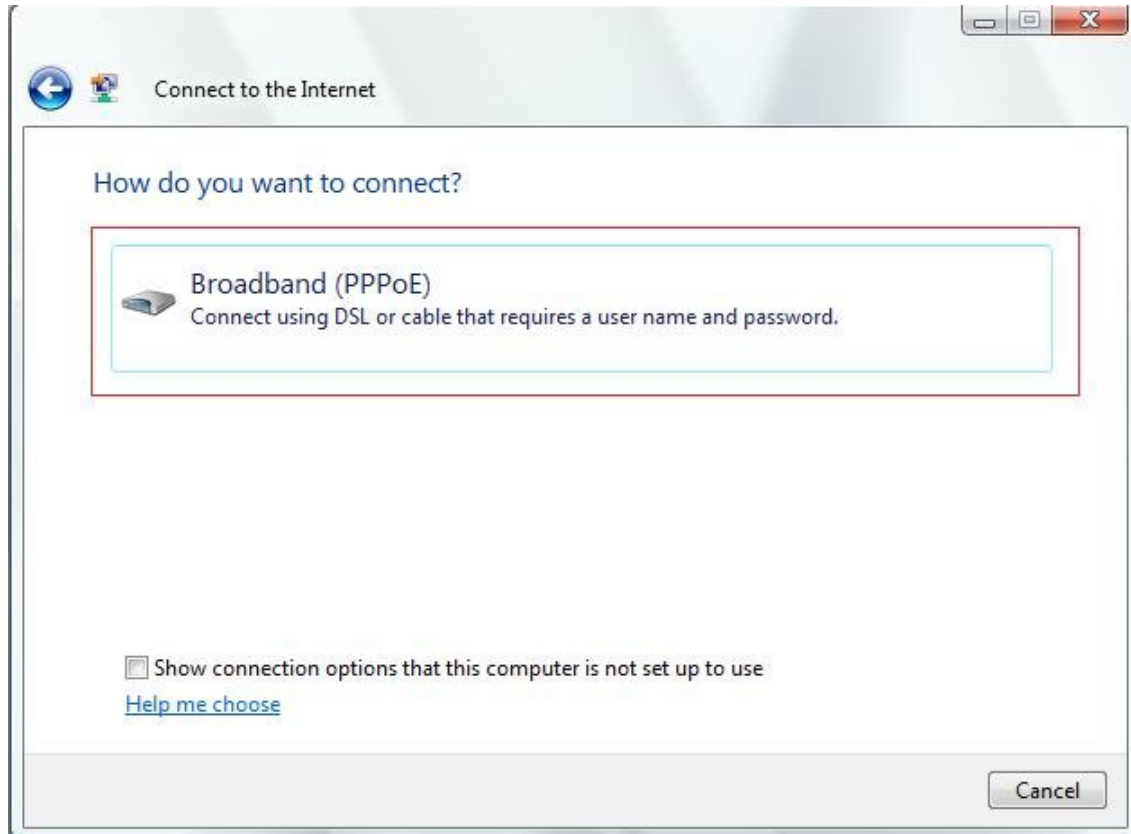
2) In the Connect To window, Click on Set Up a Connection or Network



3) In Choose a Connection Option, Click Connect to the Internet, then Click Next



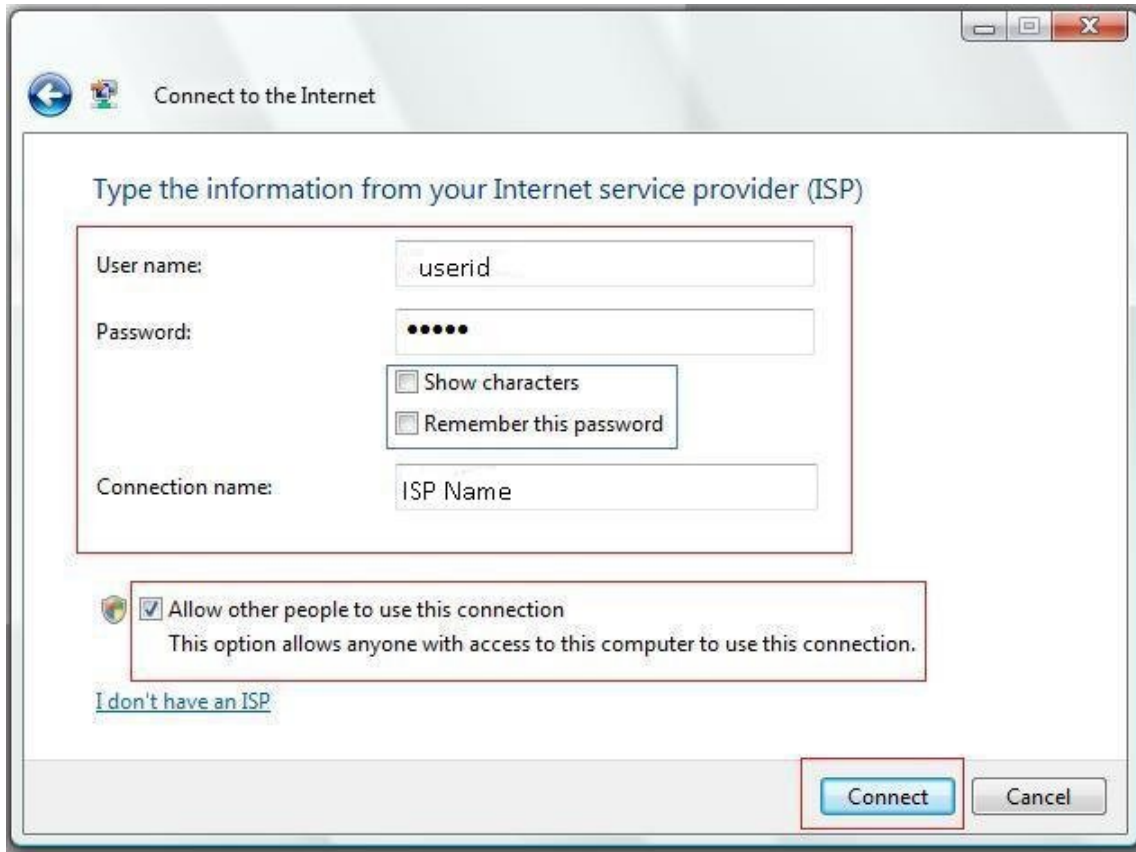
4) In Connect to the Internet, Click on Broadband (PPPoE)



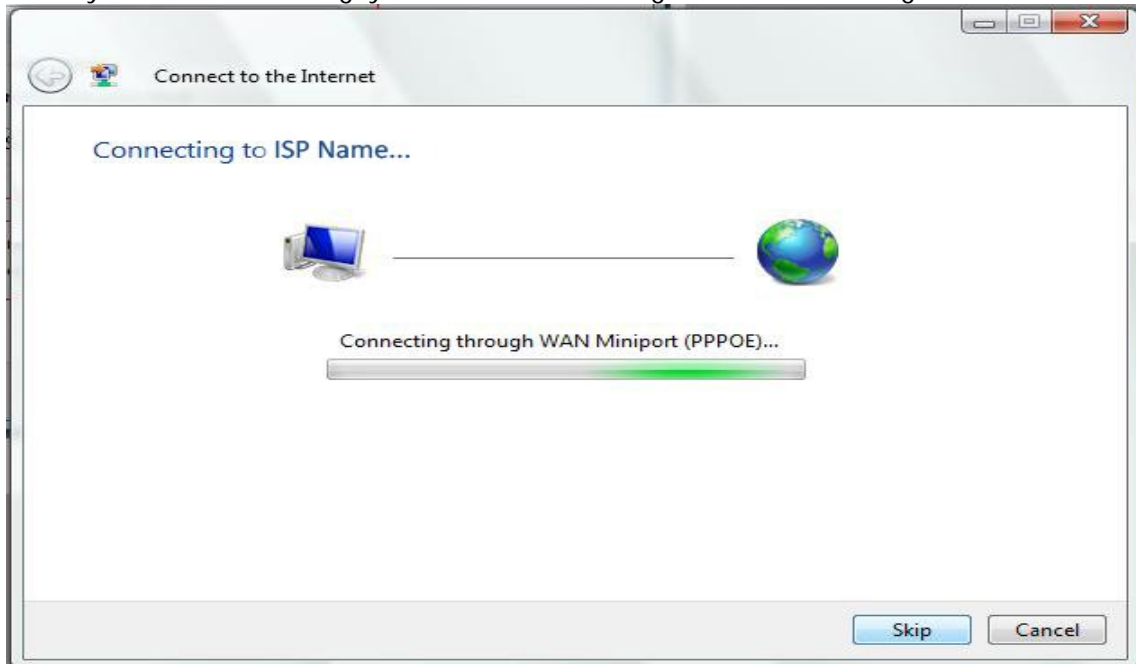
5) Enter your username and as provided by your ISP (the password is very case sensitive), You can also place a check on Show Password so that you can see the password you are typing, as well as Remember Password so that you won't have to keep on entering your password everytime you connect. After entering the needed details, Click on Connect.

In "Internet Account Information", enter the information for your account:

- Username: Enter your username, e.g. 6046381818@pppoe.net
- Password: Enter your password e.g. [V6X4J7](#)
- Confirm password: Enter your password again
- Allow other people to use this connection (Optional)



When you PC is connecting, you will see something similar to the image below:



Just like in Windows XP, you will also get a message that you are already connected, and an icon (two screens connected) indicated by a blue symbol. The next time you open your PC and wants to connect, just simply Click on Start and Connect To, and the Dialer will be one of the options you can click on.

Thank you for using services from Lynx Communications
Automated Phone Support available at 604-638-1818, press 2
Other enquiries please contact:
For Account Information, 604-638-1818 ext. #1100
For Technical Support, 604-638-1818 ext. #1140